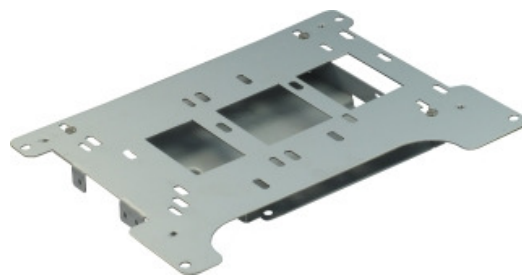


ITX Q-5 with opened side panel
(incl. HDD-Tray)



HDD/Slim-CD/DVD tray

ITX Q-5

The new generation of Mini-ITX from Inter-Tech - modern, stylish and practical. The Q-5 is completely made of aluminum and has therefore, also by the many ventilation holes, an excellent thermal load of the components. It also has a very simple and timeless look. The solid aluminum body also reduces annoying vibrations to a minimum.

Mini-ITX systems are very energy-saving, so that the external 60W Power Supply is sufficient to build up a powerful ITX system.

Once it may be a little more power, you can also use an optional 120W Power Supply, since the internal circuit board is able to process an input voltage of up to 120W.

An intelligent interior layout allows, despite the small space, an easy installation of all components.

Specifications

Motherboard	ITX
Drive Bays	5.25" Slim: 0/1* 2.5" internal: 2/1*
Front Connectors	USB 2.0: - Microphone: - Headphone: -
Opening rear	WLAN antenna: 2 COM connector: 2
Cooling System	HDD-Tray: 1x 50x50x10mm or 1x 60x60x10mm (laterally, optional)
Power Input	For 12V plugs with dimensions of 5.5x2.5x10.7mm
Packing Units	Shipping Unit: 1 Piece Packing Unit: 6 Pieces
Guarantee and Warranty	Case 24 Months Warranty Power Supply 24 Months Guarantee
Article Number	88881145
EAN-Code	4260133124745
Scope of Delivery	External 60W Power Supply Circuit board max. 120W Cable ties Screw Set Rubber feet (adhesive)
Features	External 60W Power Supply
Accessories	USB-/Audio tray - 2x USB 2.0, Audio and Mic (Art. 88885212) USB-/Audio tray - 2x USB 3.0, Audio and Mic (Art. 88885297) Aluminum cover CD/DVD – Colour: Silver (Art. 88885213) VESA Bracket (Art. 88885241) External 90W PSU (Art. 88882098) External 120W PSU (Art. 88882103)

* In case of using a 5.25" slim DVD, one internal 2.5" bay drops

Dimensions and Weight

	Cage	Case	Package
Height	80mm	80mm	275mm
Width	200mm	200mm	150mm
Depth	225mm	225mm	255mm

Weight (net): 1.40Kg
Weight (gross): 2.06Kg

DC/DC-Platine:

Connector	Quantity	Max. length
Mainboard 20+4Pin	1x	-
P4 12V 4Pin	1x	-
IDE 4Pin	1x	-
S-ATA	2x	-

DC Output	Output Voltage (V)	Max. Output Current (A)
+3.30 V	+3.30	10.0
+5.00 V	+5.00	10.0
+5.00 VSB	+5.00	2.0
+12.00 V	+12.00	4.5
-12.00 V	-12.00	0.15

Certification:

