



22GE + 2 Combo-Port Gigabit Ethernet SNMP Switch

ST3324GF

 **Highlights** Gigabit, SNMP, QoS, VLAN

Features

- 22 10/100/1000Mbps Ethernet ports, 2 Combo Gigabit ports supporting both copper and SFP connections
- 48 Gbps switching fabric capacity
- Supports port VLAN and IEEE 802.1Q VLAN
- Supports Link Aggregation Control Protocol (LACP)
- Supports Spanning Tree Protocol
- Supports Port Mirroring, Flow mirroring, VLAN mirroring
- Supports LLDP, DLDP
- Supports DHCP Snooping, Relay and Option 82
- Supports IGMP Snooping v1/v2/v3
- Supports powerful security functions like ACL, dynamic ARP inspection, IP-MAC-Port-VID Binding
- Provides SSL and SSH encryptions
- Provides high performance of Store-and-Forward architecture, broadcast storm control
- Supports SNMP v1/v2c/v3 , SSH v1/v2 switch management



Brief

The netis ST3324GF 22GE+2 Combo-Port Gigabit Ethernet SNMP Switch is designed for medium and large business networking solutions, and it fully complies with IEEE802.3/802.3u/802.3z Ethernet standards. It's equipped with 22 10/100/1000Mbps and 2 Combo Gigabit ports, supporting auto copper/fiber switching. It provides enterprise-level QoS, advanced security strategies and rich layer 2 management features, to ensure you a high-quality and stable network.

Specification

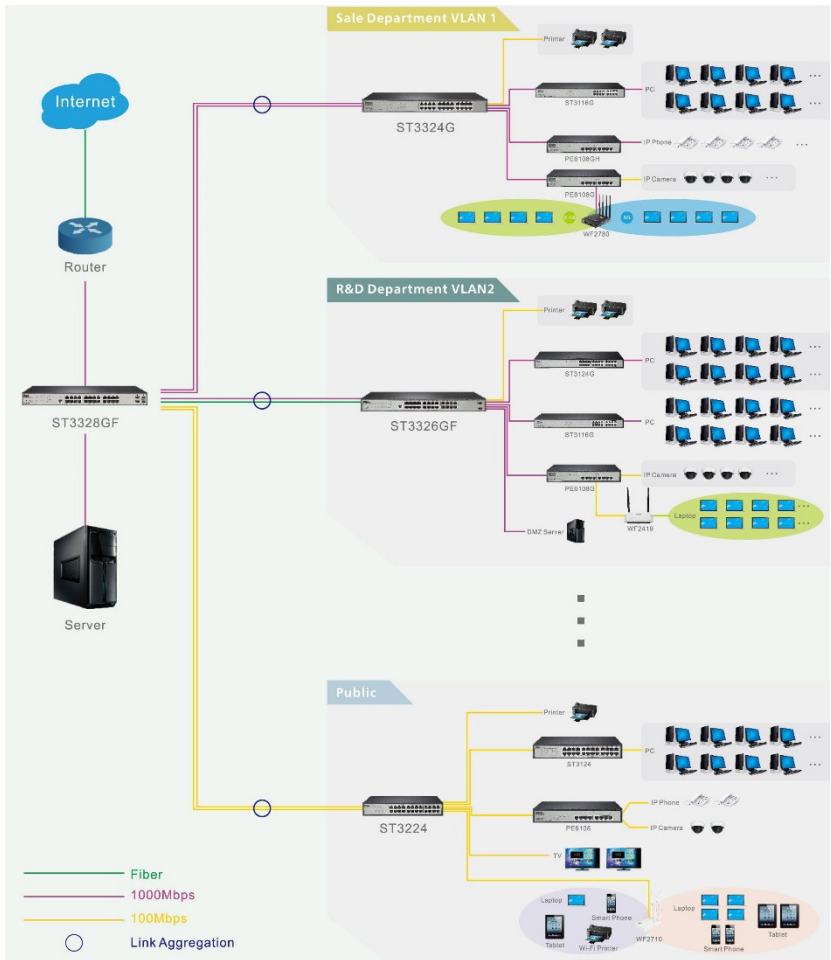
Hardware	
Interface	22* 10/100/1000Mbps RJ45 port, Auto-Negotiation, Auto MDI/MDIX 2 * Combo port: 2 * 10/100/1000Mbps RJ45 port + 2 * SFP slot(Mini-GBIC), 1000 full mode supported 1 * RS232 Console port
LED	PWR, CPU, 1-24 1000M, 1-24 LNK/ACT
Power Supply	100-240 V AC/50-60Hz
Dimensions (L x W x H)	432 x 250 x 44 mm

Switching Features	
Standard	IEEE 802.3 10Base-T, IEEE 802.3u 100Base-TX, IEEE 802.3ab 1000Base-T, IEEE 802.3z 1000Base-LX/SX, IEEE 802.3x, IEEE 802.3ad, IEEE 802.1p, IEEE 802.1q, IEEE 802.1d, IEEE 802.1w, IEEE 802.1s, IEEE 802.1x
Switching Fabric Capacity	48 Gbps
MAC Address Table	8K, auto-learning & auto-aging
Transmission Method	Store and Forward
Packet Buffer Memory	4 Mbits
Link Aggregation	Cisco ether-Channel (Static Trunk) IEEE 802.3ad LACP (Link Aggregation Control Protocol) Up to 14 Trunk groups Up to 8 ports per trunk group

Spanning Tree Protocol (STP)	STP, IEEE 802.1D (Classic Spanning Tree Protocol) RSTP, IEEE 802.1w (Rapid Spanning Tree Protocol) MSTP, IEEE 802.1s (Multiple Spanning Tree Protocol, spanning tree by VLAN) Loopback detection
Multicast	IGMP Snooping V1/V2/V3 Multicast VLAN Registration (MVR)
VLAN	IEEE 802.1Q Tag-based VLAN Up to 4K VLANs groups, out of 4049 VLAN IDs Q-in-Q tunneling Port VLAN Voice VLAN GVRP protocol for VLAN Management
Flow Control	IEEE 802.3x PAUSE frame Flow Control, Full-Duplex mode Back-Pressure Flow Control, Half-Duplex mode
Quality of Service (QoS)	8 priority queues Strict priority(SP), Weighted Round Robin(WRR), SP+WRR CoS policies Traffic-policing policies
DHCP	DHCP Snooping DHCP Relay DHCP option 82
Security	IEEE 802.1x Port-Based / MAC-Based Authentication RADIUS / TACACS+ users access authentication Access Control List(ACL) Dynamic ARP inspection IP-MAC-Port-VID Binding Broadcast Storm Control SSL and SSH encryptions
Management	Console/ Console / Telnet Command Line Interface Web SNMP v1/v2c/v3, SSH v1/v2
Others	VLAN mapping Port mirroring flow mirroring VLAN mirroring LLDP(Link Layer Discovery Protocol) DLDP (Device Link Detection Protocol) Egress and Ingress Bandwidth Control

Others	
Certification	FCC, CE
Environment	Operating Temperature: 0°C~40°C Storage Temperature: -40°C~70°C Operating Humidity: 10%~90%RH non-condensing Storage Humidity: 5%~90%RH non-condensing
Package	1 * ST3324GF 2 * Brackets 1 * RS232 Cord 1 * Power Cord

Topological Graph:



Specifications are subject to change without notice. Netis is a registered trademark of Netis Systems Co., Ltd. Other brands and product names are trademarks or registered trademarks of their respective holders. No part of the specifications may be reproduced in any form or by any means or used to make any derivative such as translation, transformation, or adaptation without permission from Netis Systems Co., Ltd.

